

### WORKSHEETS (LEMBAR KERJA)

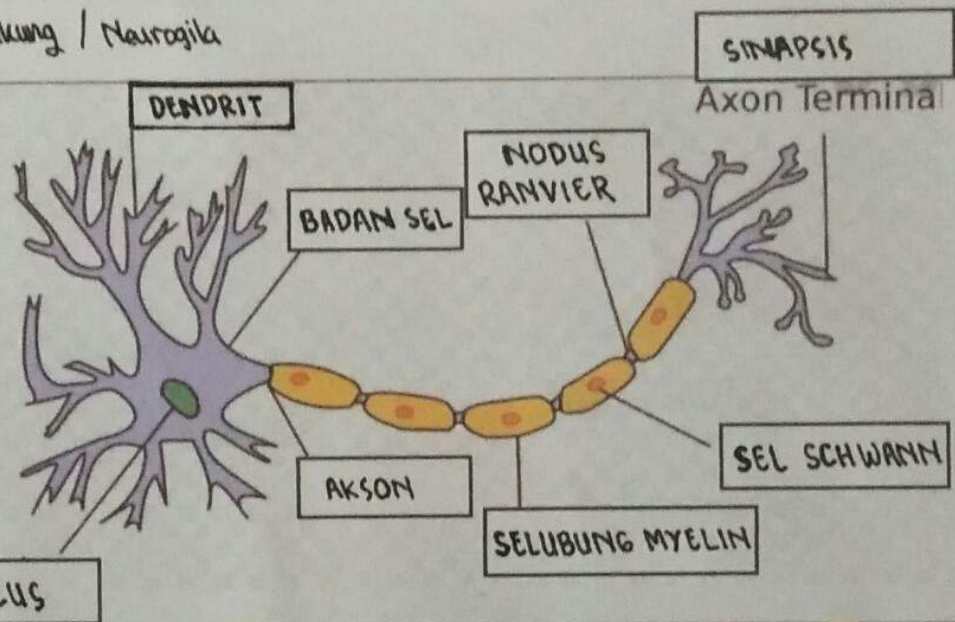
|                    |                                |
|--------------------|--------------------------------|
| Mata Kuliah        | : Anatomi                      |
| Materi             | : Anatomi Syaraf               |
| NIM>Nama Mahasiswa | : 2110101118 / SUCI RAMADHINNA |

| No | Keterangan | Pembahasan |
|----|------------|------------|
|----|------------|------------|

1. Pembagian sistem syaraf :
- a) Susunan syaraf pusat : pusat pengaturan seluruh aktivitas tubuh, terdiri atas otak dan medula spinalis (sumsum tulang belakang)
  - b) Susunan syaraf perifer : bagian dari sistem syaraf yang didalam syarafnya terdiri dari sel-sel yang membawa informasi ke sistem syaraf pusat.  
 ⇒ syaraf keanjal & syaraf spinal

Sebutkan 2 jenis sel pembangun sistem persyarafan

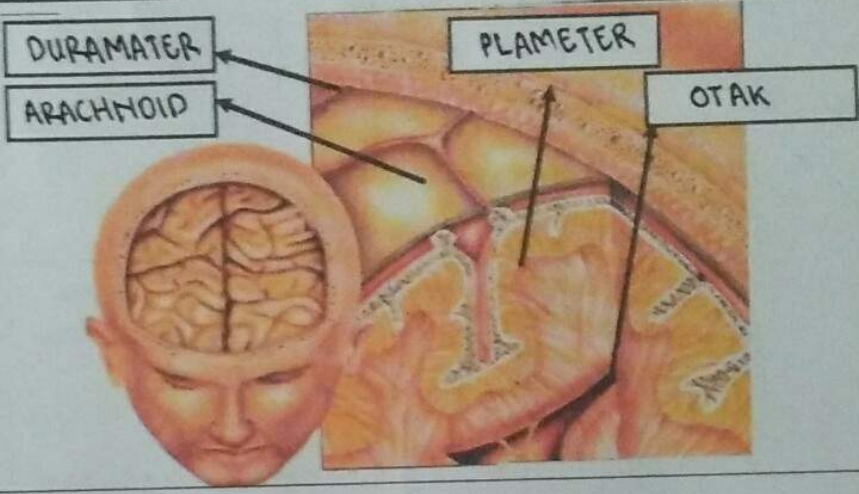
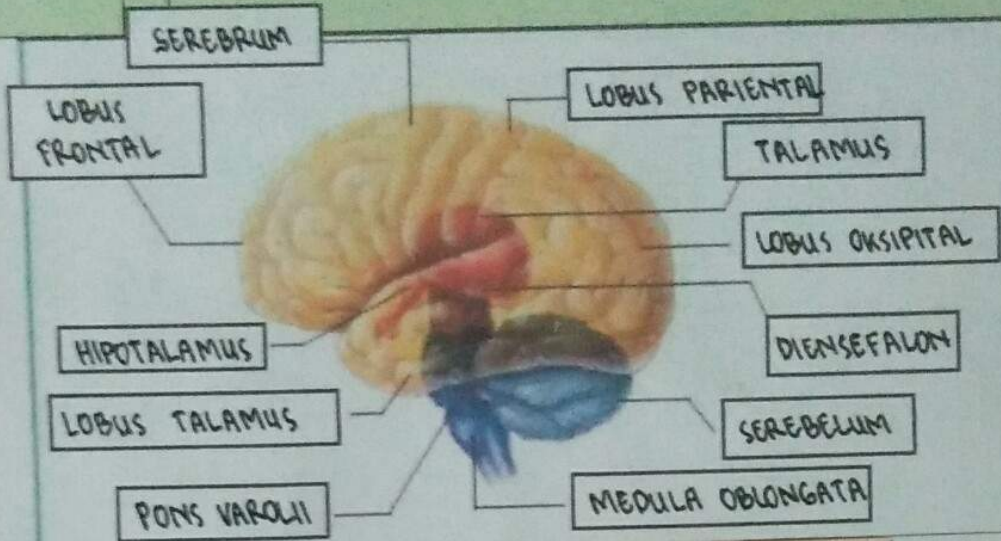
- > Sel syaraf / Neuron
- > Sel pembungkus / Neuroglia



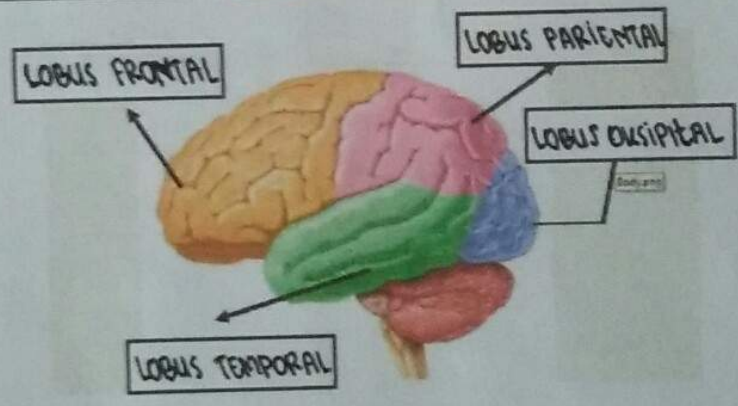
Otak terdiri dari CEREBRUM (OTAK BESAR), BRAIN STEM (BATANG OTAK) Dan CEREBELUM (OTAK KECIL)

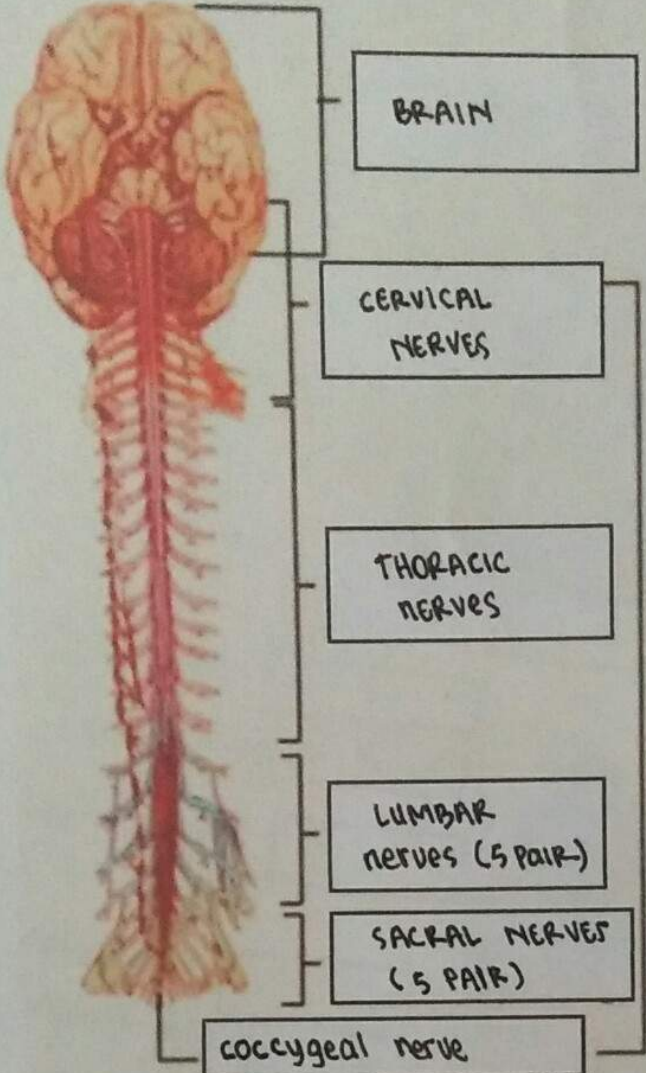
4 lobus pada cerebrum adalah lobus frontal, lobus parietal, lobus oksipital dan lobus temporal

| No | Keterangan | Pembahasan |
|----|------------|------------|
|----|------------|------------|



Lobus otak



| No | Keterangan  | Pembahasan                     |
|----|---|--------------------------------|
|    |  <p>The diagram shows a posterior view of the human brain and spinal cord. The brain is at the top, with the spinal cord extending downwards. The spinal cord is divided into several regions, each with a corresponding label in a box:         <ul style="list-style-type: none"> <li><b>BRAIN</b>: Located at the top of the diagram.</li> <li><b>CERVICAL NERVES</b>: A group of nerves branching from the upper part of the spinal cord.</li> <li><b>THORACIC NERVES</b>: A group of nerves branching from the middle part of the spinal cord.</li> <li><b>LUMBAR NERVES (5 PAIR)</b>: A group of nerves branching from the lower part of the spinal cord.</li> <li><b>SACRAL NERVES (5 PAIR)</b>: A group of nerves branching from the bottom part of the spinal cord.</li> <li><b>coccygeal nerve</b>: A single nerve at the very bottom of the spinal cord.</li> </ul> </p> | <p><b>MEDULLA SPINALIS</b></p> |