

STRUKTUR BANGUNAN SEDERHANA GENAP 2020/2021

INDAH PUJIYANTI, S.T.,M.Sc & RIRI CHAIRIYAH, S.T.,M.Arch
2021

The image is a composite of two photographs. The top photograph shows a close-up of a wooden ceiling with exposed rafters and a balcony railing. The bottom photograph shows a kitchen with light wood cabinets, a dark countertop, a sink, a stove, and open shelving. A dark teal banner with the text "ARE U READY?" is overlaid across the middle of the image.

ARE U READY?

KONTRAK PERKULIAHAN

PENILAIAN UTS DAN UAS 40%

PENILAIAN STUDIO 40%

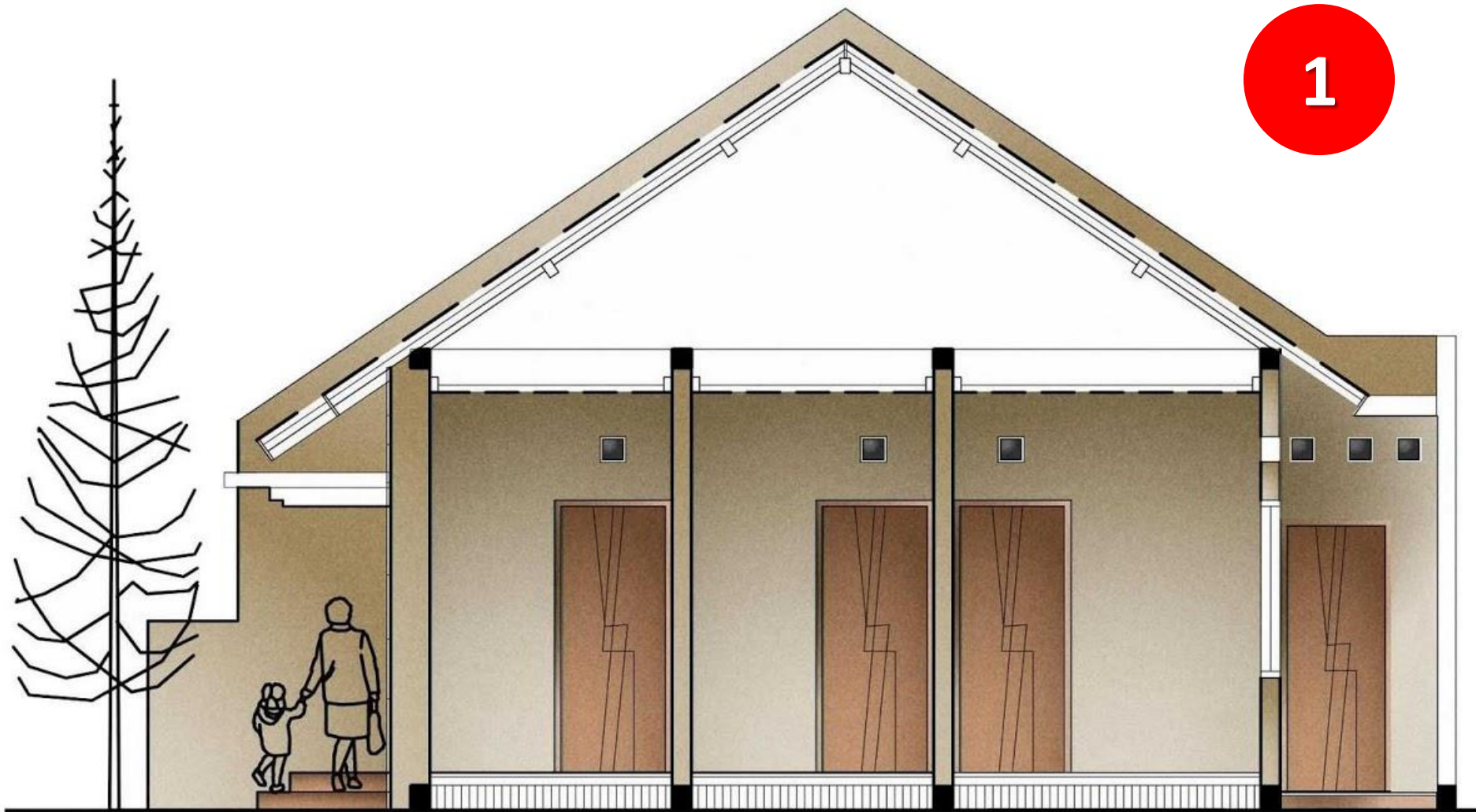
TUGAS 20%

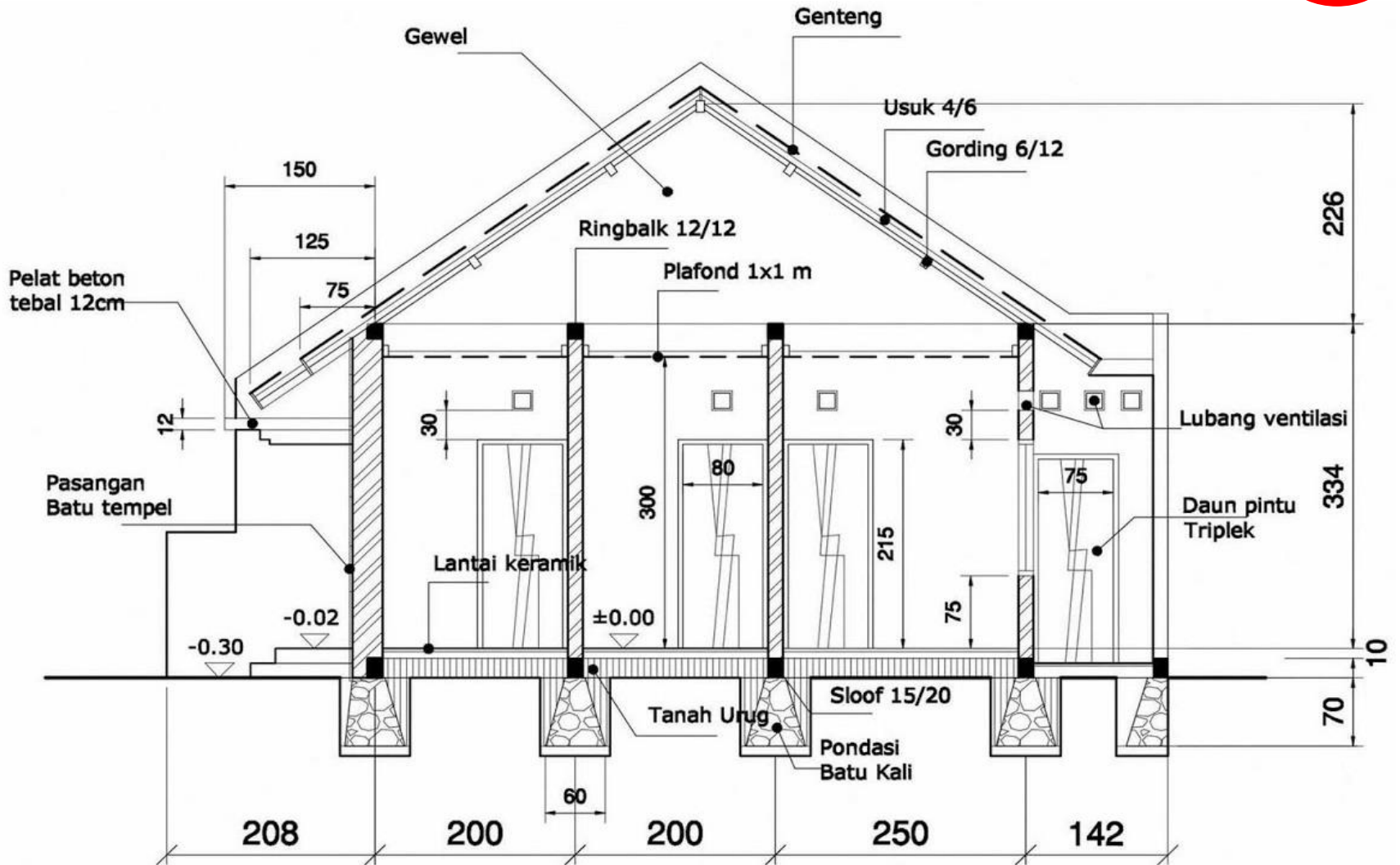
***MAHASISWA DENGAN KENDALA TEKNIS PERKULIAHAN DARING HARAP MENGHUBUNGI DOSEN PENGAMPU MK UNTUK PENENTUAN PLATFORM PERKULIAHAN DAN PENGUMPULAN TUGAS**



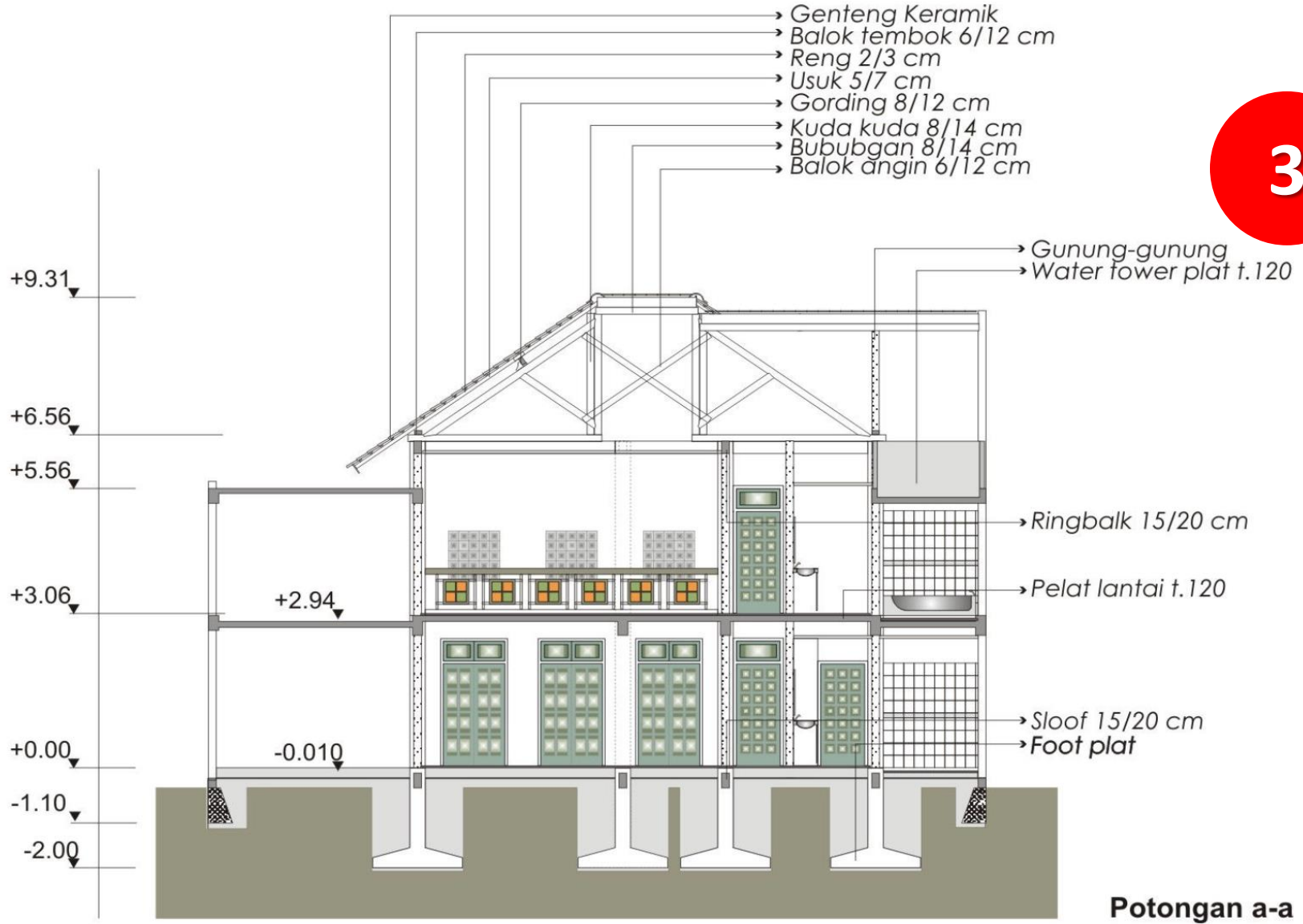
APA ITU BANGUNAN SEDERHANA?

MANAKAH YANG TERMASUK BANGUNAN SEDERHANA?

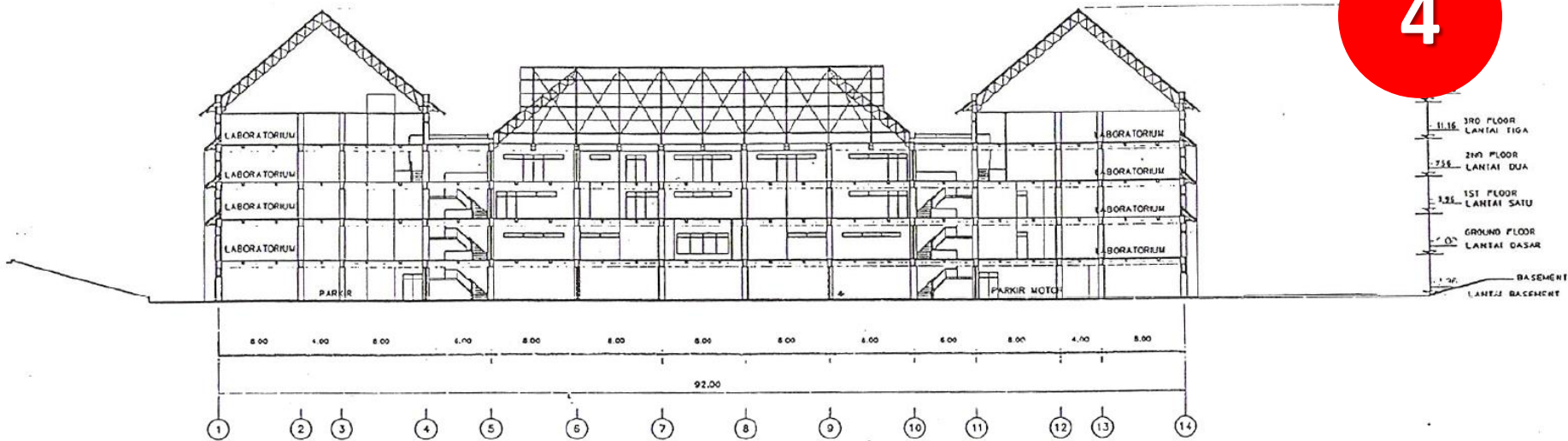




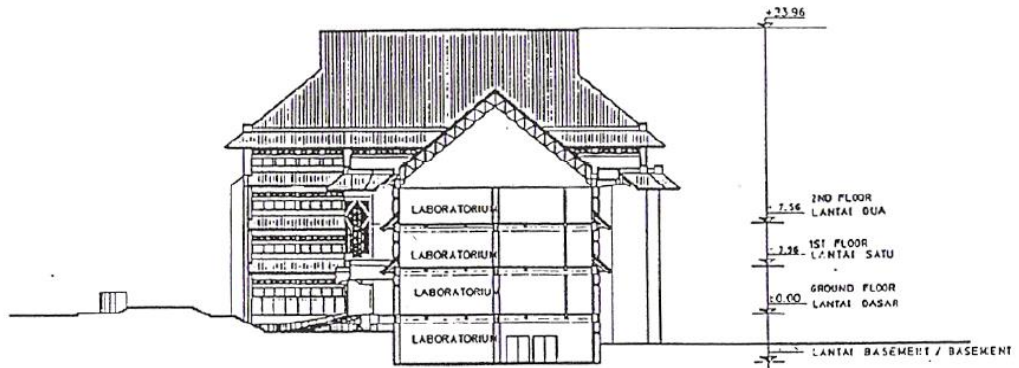
3



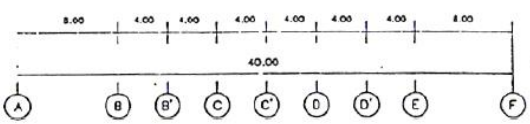
	400	400	200	300	200
<u>Lantai 02</u>	Gudang	R.Serbaguna	Toilet	Km	
<u>Lantai 01</u>	Garasi	R.Keluarga	Toilet	Km	



SECTION 2
POTONGAN 2
SKALA 1 : 200



SECTION 1
POTONGAN 1
SKALA 1 : 200



5



6



GRIYAKU

DESAIN RUMAH ONLINE

desaingriyaku.com





GRIYAKU

desaingriyaku.com



GRIYAKU

DESAIN INTERIOR & ARSITEKTUR

desaingriyaku.com



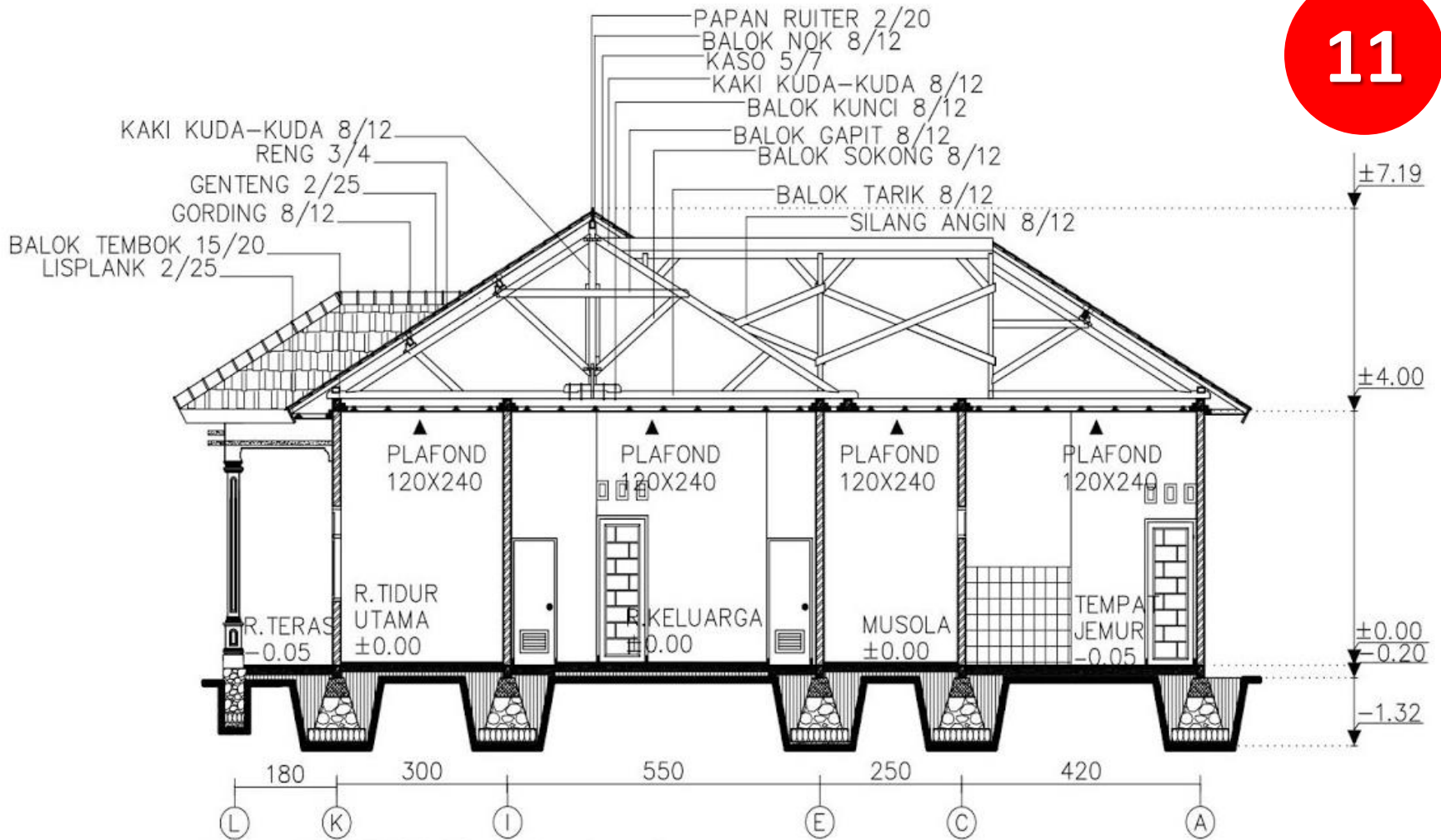
GRIYAKU

DESAIN RUMAH ONLINE

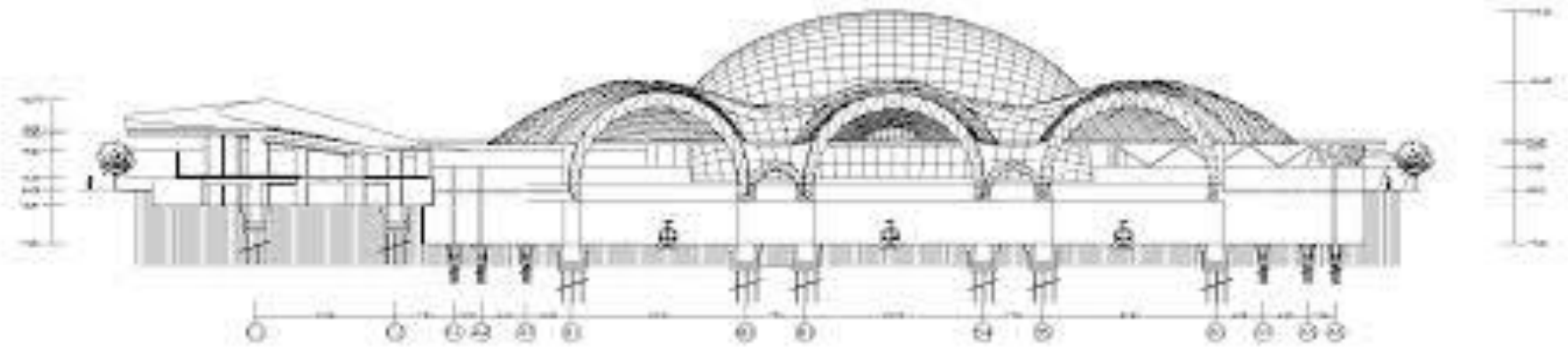
desaingriyaku.com

9





2 POTONGAN A-A
 SKALA 1 : 130







17



18



19





TUGAS MINGGU 1

STUDI LITERATUR

TERKAIT

STRUKTUR BANGUNAN SEDERHANA



**HASIL STUDI LITERATUR DIKUMPULKAN MAKSIMAL
TANGGAL 3 MARET 2021 JAM 18.00 WIB**

**MAHASISWA DENGAN KENDALA TEKNIS PERKULIAHAN DARING
HARAP MENGHUBUNGI DOSEN PENGAMPU MK UNTUK PENENTUAN
PLATFORM PERKULIAHAN DAN PENGUMPULAN TUGAS**

TETAP SEMANGAT, ENJOY DAN ISTIQOMAH

